



Age-stratified infection fatality rate of COVID-19 in the non-elderly population

Angelo Maria Pezzullo^{a,b}, Cathrine Axfors^a, Despina G. Contopoulos-Ioannidis^{a,c},
Alexandre Apostolatos^{a,d}, John P.A. Ioannidis^{a,e,*}

^a Meta-Research Innovation Center at Stanford (METRICS), Stanford University, Stanford, CA, USA

^b Sezione di Igiene, Dipartimento di Scienze della Vita e Sanità Pubblica, Università Cattolica del Sacro Cuore, Rome, Italy

^c Division of Infectious Diseases, Department of Pediatrics, Stanford University School of Medicine, Stanford, CA, USA

^d Faculty of Medicine, Université de Montréal, Montreal, Canada

^e Departments of Medicine, of Epidemiology and Population Health, of Biomedical Data Science, and of Statistics, Stanford University, Stanford, CA, USA

ARTICLE INFO

Keywords:

COVID-19
Infection fatality rate
Seroprevalence
Bias
Epidemics

ABSTRACT

The largest burden of COVID-19 is carried by the elderly, and persons living in nursing homes are particularly vulnerable. However, 94% of the global population is younger than 70 years and 86% is younger than 60 years. The objective of this study was to accurately estimate the infection fatality rate (IFR) of COVID-19 among non-elderly people in the absence of vaccination or prior infection. In systematic searches in SeroTracker and PubMed (protocol: <https://osf.io/xvupr>), we identified 40 eligible national seroprevalence studies covering 38 countries with pre-vaccination seroprevalence data. For 29 countries (24 high-income, 5 others), publicly available age-stratified COVID-19 death data and age-stratified seroprevalence information were available and were included in the primary analysis. The IFRs had a median of 0.034% (interquartile range (IQR) 0.013–0.056%) for the 0–59 years old population, and 0.095% (IQR 0.036–0.119%) for the 0–69 years old. The median IFR was 0.0003% at 0–19 years, 0.002% at 20–29 years, 0.011% at 30–39 years, 0.035% at 40–49 years, 0.123% at 50–59 years, and 0.506% at 60–69 years. IFR increases approximately 4 times every 10 years. Including data from another 9 countries with imputed age distribution of COVID-19 deaths yielded median IFR of 0.025–0.032% for 0–59 years and 0.063–0.082% for 0–69 years. Meta-regression analyses also suggested global IFR of 0.03% and 0.07%, respectively in these age groups. The current analysis suggests a much lower pre-vaccination IFR in non-elderly populations than previously suggested. Large differences did exist between countries and may reflect differences in comorbidities and other factors. These estimates provide a baseline from which to fathom further IFR declines with the widespread use of vaccination, prior infections, and evolution of new variants.

1. Introduction

The Coronavirus Disease 2019 (COVID-19) pandemic has had grave worldwide consequences. Among people dying from COVID-19, the largest burden is carried by the elderly (Ioannidis et al., 2020), and persons living in nursing homes are particularly vulnerable (Coma-Serrera et al., 2020). However, non-elderly people represent the vast majority of the global population, with 94% of the global population being younger than 70 years old, 91% being younger than 65 years old, and 86% being younger than 60 years old. It is therefore important to get accurate estimates of the infection fatality rate (IFR) of COVID-19 among non-elderly people, i.e., the proportion of deceased among

those infected, and to assess the age-stratification of IFR among non-elderly strata. Such assessments carry profound implications in public health, from evaluating the pertinence of prevention measures to vaccine strategies. Several previous evaluations (Ioannidis, 2021a; Levin et al., 2020; O'Driscoll et al., 2021; Brazeau et al., 2020) have already synthesized information on age-stratified estimates of IFR. Most of those used data from early published studies, and these tended to have information from mostly hard hit countries, thus potentially with inflated IFR estimates. Moreover, several analytical and design choices for these reviews and data syntheses can be contested (Ioannidis, 2021b) and many more potentially informative seroprevalence studies have been published since then. We recently examined age stratified IFR in the

* Corresponding author. Meta-Research Innovation Center at Stanford (METRICS), Stanford University, Stanford, CA, USA..

E-mail address: jioannid@stanford.edu (J.P.A. Ioannidis).

<https://doi.org/10.1016/j.envres.2022.114655>

Received 11 October 2022; Received in revised form 21 October 2022; Accepted 22 October 2022

Available online 28 October 2022

0013-9351/© 2022 Elsevier Inc. All rights reserved.

non-elderly populations as a secondary analysis of a project focused primarily on the IFR in the elderly (Axfors and Ioannidis, 2022); however, in this evaluation only studies with sampling until the end of 2020 and which had a large number of elderly individuals were considered. The median IFR considering available data from fully representative general population studies was 0.0009% at 0–19 years, 0.012% at 20–29 years, 0.035% at 30–39 years, 0.109% at 40–49 years, 0.34% at 50–59 years, and 1.07% at 60–69 years without accounting for seroreversion (loss of antibodies over time in previously infected individuals). Including also convenience sample studies (and again without accounting for seroreversion) the respective age groups median IFR estimates were 0.001%, 0.010%, 0.023%, 0.050%, 0.15%, and 0.49% (Axfors and Ioannidis, 2022).

The objective of this study was to accurately estimate the COVID-19 IFR in the non-elderly population. To do so, we extended our previous IFR analysis to non-elderly age strata pertaining to the pre-vaccination era by examining studies published until mid-2022 regardless of whether they had many elderly participants as well, while using rigorous methods for study selection and analysis. We focused on studies that evaluated seroprevalence in representative general population samples at a national level. We also explored whether population and other features were associated with the IFR in the non-elderly population.

2. Methods

2.1. Design and protocol

This was a mixed-methods analysis combining data from different sources. Analyses of IFR estimation in the non-elderly were performed in countries where information on age-stratified COVID-19 deaths was available so as to be able to separate deaths among the non-elderly. The protocol for this study was registered at the Open Science Framework (<https://osf.io/xvupr>) prior to full data analysis but after piloting data availability and after having done analyses on some studies as part of a related project focused on IFR estimates in the elderly (Axfors and Ioannidis, 2022). A secondary project using similar search strategies and eligibility criteria but focusing on relative seroprevalence ratios in different age groups (Axfors et al., 2022) has been included in the same protocol and published separately.

2.2. Eligible seroprevalence studies

We identified seroprevalence studies (peer-reviewed publications, official reports, or preprints) in the live systematic review SeroTracker (Arora et al., 2020) and performed a PubMed search using the string “seroprevalence AND (national OR stratified) AND COVID-19” to identify potentially eligible studies that were recently published and thus may not have been yet indexed in SeroTracker. The initial search was performed on February 8, 2022 and updated on May 25, 2022.

We included only those studies on SARS-CoV-2 seroprevalence that met the following criteria:

- (i) Sampled any number of participants aged <70 years in a national representative sample.
- (ii) Sampling was completed by end February 2021 and at least 90% of the samples had been collected before the end January 2021 (to avoid the impact of vaccination on IFR calculations).
- (iii) Adults (≥ 21 years old) were included, regardless of whether children and/or adolescents were included or not.
- (iv) Provided an estimate of seroprevalence for non-elderly people (preferably for <70 years and/or <60 years, but any cut-off between 54 and 70 years was acceptable)
- (v) Explicitly aimed to generate samples reflecting the general population.

We excluded studies focusing on patient cohorts (including residual clinical samples), blood donors, workers (healthcare or other), and insurance applicants and studies where the examined population might have had lower or higher risk than the general population, as explained and justified elsewhere (Axfors et al., 2022).

Similar to the respective protocol for estimating IFR in the elderly (Axfors and Ioannidis, 2022) and the project on seroprevalence ratios in non-elderly vs elderly (Axfors et al., 2022), we used predefined rules (i) for studies done in the USA (only those that had adjusted the seroprevalence estimates for race/ethnicity were retained, since this factor is known to associate strongly with the risk of SARS-CoV-2 infection); (ii) for studies with several sampled (sub)regions of a country (we accepted those where the sampling locations were dispersed across the country to form a reasonable representation of the entire country); (iii) for studies where crude seroprevalence was less than [1-test specificity] and/or the 95% confidence interval of the seroprevalence went to 0% (excluded, since the uncertainty on seroprevalence [and thus also IFR] for them was very large); and (iv) for age boundaries (excluded studies that included in their sampling only children and/or adolescents without any adults 21 years or older; otherwise studies were accepted regardless of presence or not of upper or lower boundaries).

Finally, the main analyses considered only studies from countries where information was available on the proportion of cumulative COVID-19 deaths among non-elderly with an upper cutoff placed between 60 and 70 years. Countries without this information were considered in sensitivity analyses while making certain assumptions for imputation of the age distribution of COVID-19 deaths (as discussed below).

2.3. Extracted information

Data extraction for eligible articles was performed in duplicate by at least two authors independently (AA, AMP, DCI) and disagreements were discussed. In cases of persistent disagreements, a third author arbitrated.

For each potentially eligible study, we tried to identify available data on the proportion of cumulative COVID-19 deaths among people <70 years old and among people <60 years old, which are the two main definitions for the non-elderly population in our analysis. If data were not available for these two cut-offs, but were available for a cut-off of <65, we imputed the respective death data for cut-offs of <70 and <60. For the imputations, we assumed that in a 10-year interval in that age vicinity, 1/3 of the deaths had occurred in the lower 5-year bin and 2/3 of the deaths had occurred in the upper 5-year bin. For example, if data on deaths were given for the age bins <55, 55–65 and 65–75 years, we assumed that 1/3 of the deaths in the age bin 55–65 occurred in the 55–60 years group so as to estimate deaths <60 years; and we assumed that 2/3 of deaths in the age bin 65–75 occurred in the 65–70 years group so as to estimate deaths <70 years. Studies done in countries where there was no available information on age-stratified COVID-19 deaths with an age-cutoff in the 60–70 range were considered only in sensitivity analyses with imputation of age distribution of COVID-19 deaths (as discussed below).

Similar to previous projects (Ioannidis, 2021a; Axfors et al., 2022), we extracted from all eligible seroprevalence studies their information on country, recruitment and sampling strategy, dates of sample collection, sample size in the non-elderly group (using age cutoffs <70, <65, and <60, whichever were available), and types of SARS-CoV2 antibodies measured (immunoglobulin G (IgG), IgM and IgA).

For the non-elderly population, we extracted the estimated unadjusted seroprevalence (positive samples divided by all samples tested), the most fully adjusted seroprevalence, and the factors that the authors considered for adjustment in the most fully adjusted calculations. Antibody titers may decline over time. For example, a modelling study estimating the average time from seroconversion to seroreversion at 3–4 months (Shioda et al., 2020) and other investigators have also found

steep decreases in antibody assay sensitivity over time (Bailey et al., 2022) and a systematic review found large variability in seroreversion rates across assays and studies (Owusu-Boaitey et al., 2022). Therefore, for consistency, if there were multiple different time points when seroprevalence was assessed in a given study, we selected the one that gave the highest seroprevalence estimate and when there was a tie we chose the earliest one (in a sensitivity analysis, we excluded from the calculations studies where the chosen time point was not the latest).

Whenever authors had already adjusted for seroreversion, we used the seroreversion-adjusted estimate. When the authors had not adjusted for seroreversion, we adjusted for 5% monthly rate of seroreversion, correcting the observed seroprevalence by 0.95^m -fold, where m is the number of months from the peak of the first epidemic wave in the specific location. The peak of the first epidemic wave was defined as one week before the date with the highest rolling average 7-day mortality (according to Worldometer) until August 31, 2020. If two or more dates were tied for peak values, we chose the date corresponding to the midpoint between the first and last one.

Whenever authors had not adjusted for antibody test performance (sensitivity and specificity), we used the Gladen-Rogan formula (Rogan and Gladen, 1978) to make this adjustment.

The population size overall and in the non-elderly population (using cut-offs of 70 years and of 60 years) in the relevant country were primarily obtained from the populationpyramid.net. If not provided by this website, we used either official population data (e.g., the latest available national census), or the seroprevalence study itself, in that order, to retrieve the relevant number for the end of 2020 (or as close as possible to that date).

Cumulative COVID-19 deaths overall and in the non-elderly population (using separately the <70 and < 60 year cut-offs) for the relevant country were extracted, whenever available, from COVerAGE-DB (Riffe et al., 2021) [<https://osf.io/mpwjq/>], The Demography of COVID-19 Deaths database of Institut national d'études démographiques (DCD-INED) (French Institute for Demographic Studies) [<https://dc-cov.id.site.ined.fr/en/>], official reports, or Worldometer, in that order. Both COVerAGE-DB and DCD-INED are compilations of official reports. The total number of deaths (confirmed and probable) was preferred whenever available. We extracted the accumulated deaths until the date 1 week after the midpoint of the seroprevalence study period (or the date closest to this that had available data) to account for different delays in developing antibodies versus dying from infection. For a sensitivity analysis, we extracted data on accumulated deaths until the date 2 weeks after the midpoint. By midpoint, one refers to the median date of sampling, or (if the rate of sampling over time is unclear and there is no suggestion that it was uneven in different time periods) the time point that is equidistant from the start and end dates. If the seroprevalence study claimed strong arguments to use another time point or approach, while reporting official statistics on the number of COVID-19 deaths overall and in the non-elderly population, we extracted that number instead. The number of deaths is only an approximation and may be biased for various reasons, including different time lag from infection to death and imperfect diagnostic documentation of COVID-19 potentially leading to either under- or over-counting (Ioannidis, 2021c).

2.4. Estimation of the number of infected and deceased non-elderly

The number of infected people was estimated by multiplying the adjusted estimate of seroprevalence and the population size in non-elderly. If a study did not give an adjusted seroprevalence estimate, we used the unadjusted seroprevalence instead, as mentioned above. Both adjusted and unadjusted estimates were corrected for test performance and seroreversion, unless already corrected by the authors. For locations that did not report seroprevalence data for the non-elderly group for the <60 and < 70 cut-offs, we used the seroprevalence estimate for the closest cut-off available in the 60–70 range. We applied a correction for studies that excluded persons with diagnosed COVID-19

from participating in their sample, primarily using study authors' corrections (e.g., PCR tests) or adding the number of identified COVID-19 cases in community-dwelling non-elderly for the location until the seroprevalence study midpoint. For studies that performed surveys using both seroprevalence and PCR testing and presented as main analyses data for being positive in either test, we used the data that reflect infection documented with either way.

The total number of COVID-19 fatalities in non-elderly (for the <60 and < 70 cut-offs) were counted from available sources until 1 week after the midpoint of the seroprevalence study period. If the age distribution of COVID-19 deaths was only available for a date more than 1 week apart from the preferred one, we assumed that the proportions of age-stratified deaths were stable between the time points and inferred the total number of fatalities for the preferred date. That is, we calculated the percentage of fatalities in non-elderly for the available date (namely, the number of deaths in non-elderly divided by total number of deaths) and multiplied it with the total number of deaths for the preferred date to obtain the COVID-19 fatalities in non-elderly for the preferred date. When COVID-19 deaths were not available for the <60 and < 70 cut-offs (e.g. given only for the age bin 65-75), we imputed them using the 1/3-rule imputation for breaking down 10-year bins to 5-year bins, as mentioned above.

2.5. IFR estimation

We calculated the inferred IFR in the non-elderly, by dividing the number of deaths in this population group by the number of infected people for the same population group. We performed separate calculations defining the non-elderly as those being <60 and those being <70 years old.

2.6. Data extraction for age-stratified analyses within the non-elderly group

The same considerations outlined above for the entire non-elderly population were applied for extracting information on seroprevalence, population size and the number of COVID-19 deaths for separate age strata bins within the non-elderly population, whenever available.

Whenever seroprevalence estimates and COVID-19 mortality data were available for specific granular age groups, we complemented data extraction for all available age strata. Studies were excluded from the age-stratified analysis if no mortality data were available for any age stratum of maximum width 20 years and maximum age 70 years. We used the same time points as those selected for the overall non-elderly data analysis. We included all age strata with a maximum width of 20 years and available COVID-19 mortality information.

We corresponded the respective seroprevalence estimates for each age stratum with eligible mortality data. Consecutive strata of 1–5 years were merged to generate 10-year bins. For seroprevalence estimates we used the age strata that most fully cover/correspond to the age bin for which mortality data are available; specifically for the youngest age groups, seroprevalence data from the closest available group with any sampled persons ≤ 20 years were accepted. E.g. for the Ward et al. UK study (Ward et al., 2021), the youngest stratum with seroprevalence data is 18–24 years old. Population statistics for each analyzed age bin were obtained from the same sources as for the overall analysis for the non-elderly.

For countries for which age information was missing for a proportion of the cumulative COVID-19 deaths, we assumed the age distribution to be the same as for the non-missing proportion.

2.7. Data synthesis

The main outcomes were the IFR in people <60 years old and <70 years old, as well as age-stratified IFR estimates in smaller age bins among the non-elderly.

Similar to previous work on IFR-estimating studies (Ioannidis, 2021a; Axfors and Ioannidis, 2022), we estimated the sample size-weighted IFR of non-elderly (separately for <60 and <70 years old) for each country (if multiple studies were available for that country) and then estimated the median and range of IFRs across countries. We expected very large heterogeneity among IFR estimates, therefore we did not use meta-analysis methods.

To generate plots of IFRs with some estimates of uncertainty, we performed calculation of 95% CIs of IFRs based on extracted 95% CIs from seroprevalence estimates. Primarily, 95% confidence intervals are direct extractions from the seroprevalence studies. For studies that did not report such intervals, we complemented the analysis with a calculation using the number of sampled and seropositive non-elderly individuals (Clopper Pearson interval calculation). For those that provided adjusted estimates for age brackets, we combined estimates for each study using a fixed effects inverse variance meta-analysis (of arcsine transformed proportions) to obtain 95% CIs. No further factors were introduced in the calculation beyond the adjustments made by seroprevalence study authors (except adjusting estimates for test performance using the Gladen-Rogan formula and adjusting also for seroreversion -assuming 5% monthly seroreversion-, where applicable).

Similar to the overall non-elderly analyses, for age strata with multiple estimates from the same country, we calculated the sample size-weighted IFR per country before estimating median IFRs across countries for age groups 0–19, 20–29, 30–39, 40–49, 50–59, and 60–69 years. IFR estimates were placed in these age groups according to their midpoint, regardless of whether they perfectly match the age group or not, e.g. an IFR estimate for age 18–29 years was placed in the 20–29 years group. As for the main analysis, whenever no adjustment had been made for test performance, we adjusted the estimates for test performance using the Gladen-Rogan formula; and whenever there had been no adjustment for seroreversion, we corrected the results assuming 5% monthly seroreversion.

2.8. Sensitivity analyses

We performed the following sensitivity analyses:

1. Limited to high-income countries. Under- and over-counting of deaths may occur also in high-income countries (Ioannidis, 2021c), but the concern for under-counting is more serious in other countries (Adam, 2022). Nevertheless, under-counting may be much less of a problem in non-elderly people than in the elderly.
2. Considering deaths up to 2 weeks after the midpoint of seroprevalence sampling, instead of just one week.
3. Excluding studies where the chosen time point was not the latest available (observed seroprevalence has declined subsequently).
4. Exploring different seroreversion corrections of the IFR by X^m -fold, where m is the number of months from the peak of the first epidemic wave in the specific location. X was given values of 1.00, 0.99, and 0.90 corresponding to no seroreversion, 1%, and 10% relative rate of seroreversion every month from the peak of the first epidemic wave in the specific location to the date of seroprevalence estimate.
5. Including in the overall calculations of IFR in the non-elderly also imputed data from countries where the proportion of COVID-19 deaths occurring among the non-elderly was not available. This is a post-hoc sensitivity analysis and it was adopted because a substantial number of studies fell in this category. Specifically, we assumed that the proportion of COVID-19 deaths represented by the non-elderly was a minimum of 10% for 0–59 years (and 20% for

0–69 years) and a maximum of 60% for 0–59 years (and 90% for 0–69 years).

2.9. Evaluation of heterogeneity

We explored whether the estimated IFR for the non-elderly across different countries was associated with the structure of the age pyramid in the population of each country. Specifically, we performed meta-regression analyses of the country IFR in the non-elderly against the proportion of the non-elderly population that is <50 years old. Separate regression analyses were performed using the definition of non-elderly as being <70 years old and <60 years old. Additional factors that were explored for association with IFR in the non-elderly were country-income (high-income country versus other), and the population-level annual mortality rate in each country (<https://worldpopulationreview.com/country-rankings/death-rate-by-country>). We used these observations in trying to extrapolate to the respective features of the global population, to try to approximate the IFR among the non-elderly in the global population.

3. Results

3.1. Eligible studies

By February 8, 2022, Serotracker had 2930 seroprevalence studies, of which 547 entries were described as “national”. Of those, 420 had their sampling end date before February 28, 2021. 183 were characterized as “household and community samples” or “multiple populations”. Of those, 107 were of low, moderate or unclear risk of bias. We screened in-depth the 107 entries and 73 were excluded. Therefore, 34 studies were eligible from this source. Our search on PubMed yielded 474 items, of which four additional eligible studies were identified. On May 25, 2022, we updated the search and found 2 additional studies to be included. In total, data from 40 studies which covered national seroprevalence estimates for 38 different countries were extracted and analyzed (Ward et al., 2021; Saeezai et al., 2020; Royo-Cebrecos et al., 2021; Austria, 2021; Tang et al., 2022; Piler et al., 2022; Espenhain et al., 2021; Petersen et al., 2020; Finnish Institute for Health and Welfare; Warszawski et al., 2022; Carrat et al., 2022; Neuhauser et al., 2021; Merkely et al., 2020; Gudbjartsson et al., 2020; Murhekar et al., 2021; Khalagi et al., 2021; Heavey et al., 2021; Reicher et al., 2021; Sabbadini, 2020; Yoshiyama et al., 2021; Government of Jersey, 2020; Bellizzi et al., 2021; Virachith et al., 2021; Hoballah et al., 2022; Šmigelskas et al., 2021; Abdul-Raheem et al., 2021; Basto-Abreu et al., 2022; Chimeddorj et al., 2021; Government of Nepal, 2021; Vos et al., 2021; Anda et al., 2022; Al-Abri et al., 2021; Ahmad et al., 2022; Canto E Castro et al., 2022; Popova et al., 2021; Talla et al., 2022; Poljak et al., 2021; de España, 2020; Sullivan et al., 2022; Kalish et al., 2021). 30 countries had publicly available age-stratified COVID-19 death data. The report of one of these countries (Austria) did not report any information on age-stratified seroprevalence. Therefore, 29 countries with data from 31 studies were included in the primary analysis (Appendix Fig. 1).

3.2. Characteristics of eligible studies

Table 1 shows the main characteristics for the 31 studies with publicly available age-stratified COVID-19 death and seroprevalence data. As shown, these data originated from 24 high income countries and 5 other countries.

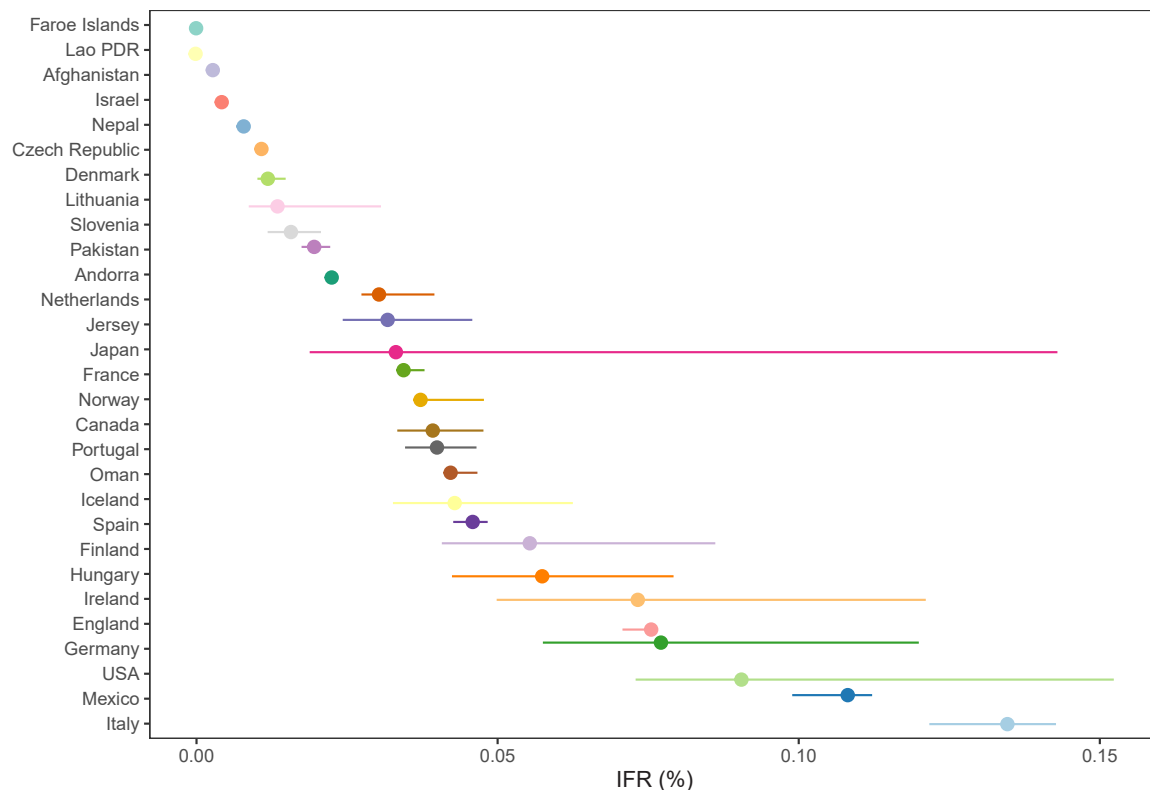


Fig. 1. Infection fatality rate (IFR) and 95% confidence interval per country. Panel (A) for <60 years old people. Panel (B) for <70 years old people. Note: For multiple estimates from the same country (France and USA), we calculated the sample size-weighted IFR per country. The 95% confidence intervals are estimated primarily as direct extractions from the seroprevalence studies. For studies that did not report 95% confidence intervals, we complemented with a calculation using the number of sampled and seropositive individuals. For those that provided adjusted estimates for age brackets (e.g., 0–9, 10–19, 20–29, etc.), we combined estimates for each study using a fixed effects inverse variance meta-analysis (of arcsine transformed proportions) to obtain 95% confidence intervals. Asymmetry around point estimates may be observed for these cases, since point estimates were calculated by multiplying age bracket seroprevalence by the corresponding population count (which is preferable, since it takes into account population distribution). Please note that uncertainty in seroprevalence estimates is larger than conveyed by typical 95% confidence intervals.

3.3. IFR estimates in the non-elderly

In 29 countries of the primary analysis, with age-stratified COVID-19 death and seroprevalence data, IFRs in non-elderly (Fig. 1, Table 1) had a median of 0.034% (interquartile range (IQR) 0.013–0.056%, Fig. 1A) for the 0–59 years old population, and of 0.095% (IQR 0.036–0.119%, Fig. 1B) for the 0–69 years old population. Fig. 1 also shows 95% CIs for IFRs based on 95% CIs for seroprevalence estimates.

3.4. IFR estimates per narrow age strata

For the narrow age bins analysis (Fig. 2), the median IFR was 0.0003% (IQR, 0.0000 to 0.002) at 0–19 years, 0.002% (IQR, 0.000 to 0.007) at 20–29 years, 0.011% (IQR, 0.005 to 0.032) at 30–39 years, 0.035% (IQR, 0.011 to 0.077) at 40–49 years, 0.123% (IQR 0.047 to 0.220) at 50–59 years, and 0.506% (IQR, 0.208 to 0.860) at 60–69 years. Full range of the IFRs and patterns for each country are shown in the Appendix Fig. 2. Excluding from the calculations age bins with 0 deaths (where IFR is thus calculated as 0.000% but has very large uncertainty), the median IFR was 0.001%, 0.006%, 0.012%, 0.048%, 0.158%, and 0.516% in these age bins, respectively.

3.5. Sensitivity analyses

Among high-income countries, the median IFR was 0.038% in the 0–59 years old age group and 0.098% in the 0–69 years old age group. Sensitivity analysis considering deaths up to 2 weeks after the midpoint of seroprevalence sampling in all countries (both high-income and others), instead of just one week, yielded largely similar results (median IFR was 0.038% in 0–59 and 0.099% in 0–69 age groups). Sensitivity analysis excluding studies where the chosen time point of peak seroprevalence was not the latest available (observed seroprevalence has declined subsequently) yielded median IFR of 0.032% in the 0–59 years old group and 0.079% in the 0–69 years old age group. Appendix Table 2 shows results with different assumptions about seroreversion.

In the post hoc sensitivity analysis aiming to include all countries in the calculations, for countries without available age-stratified mortality data, 10–60% and 20–90% of COVID-19 deaths were assumed to have occurred among 0–59 and 0–69 year old people, respectively. Moreover, since data on age stratified deaths for Austria had been collected but the seroprevalence study report did not describe age stratified seroprevalence, we considered the overall seroprevalence (4.7%) for 0–59 and 0–69 age groups in this additional analysis. Under the minimum age-stratified mortality scenario, the median IFRs were 0.025% (IQR

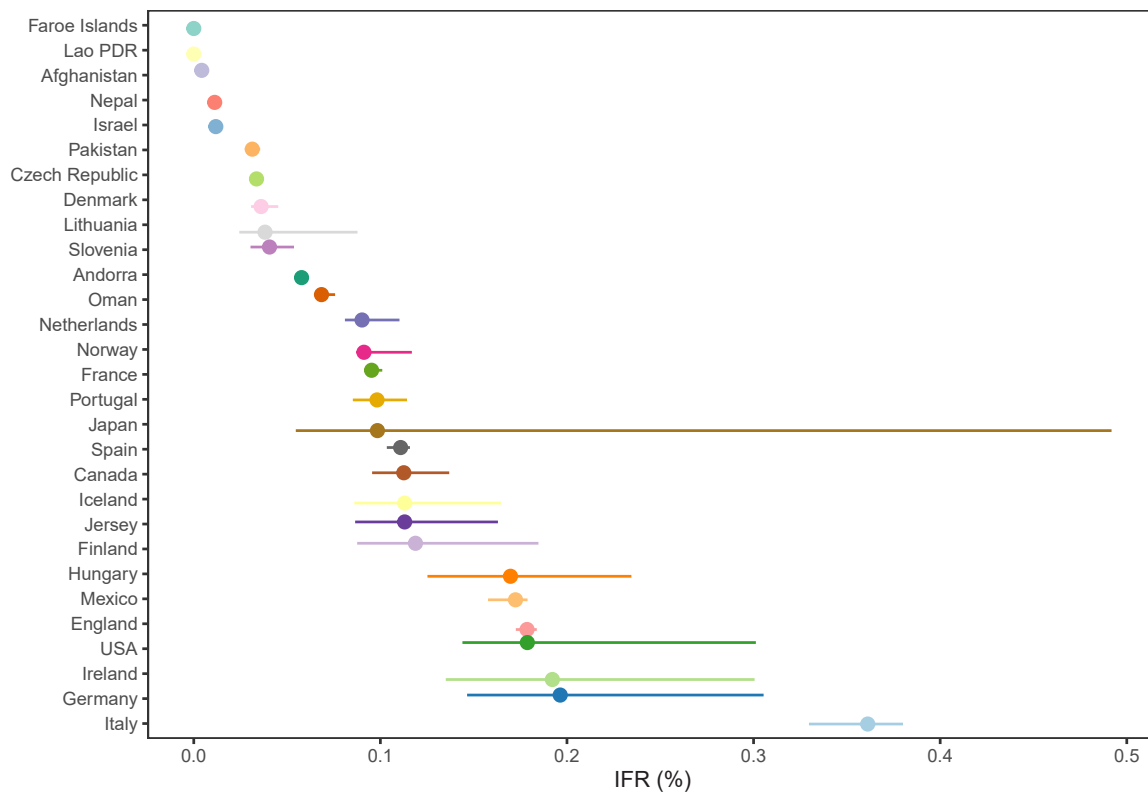


Fig. 1. (continued).

0.006–0.043%) for the 0–59 and 0.063% (IQR 0.011–0.113%) for the 0–69 age group. Under the maximum scenario, the median IFRs were 0.032% (IQR 0.012–0.053%) for the 0–59 and 0.082% (IQR 0.034–0.117%) for the 0–69 age group.

3.6. Evaluation of heterogeneity

The pre-specified regression of IFR for the 0–59 years old age group against the proportion of people <50 years old (Fig. 3A) had a slope of -0.002 ($p = 0.08$), suggesting an IFR of 0.053%, 0.042%, and 0.026% when the proportion of people <50 years old in the 0–59 group was 77.5%, 82.5%, and 90%, respectively. The same analysis for the 0–69 years old age group (Fig. 3B) had a slope of -0.004 ($p = 0.01$), suggesting an IFR of 0.137%, 0.115%, 0.071%, and 0.026% when the proportion of people <50 years old in the 0–69 group was 65%, 70%, 80%, and 90%, respectively.

The median IFR for the 0–59 years old age group was 0.038% in high-income countries versus 0.008% in other countries ($p = 0.12$ by Mann-Whitney U test). The median IFR for the 0–69 years old group was 0.098% in high-income countries versus 0.012% in other countries ($p = 0.04$ by Mann-Whitney U test). A regression of IFR for the 0–59 years old age group against the crude death rate per 1000 people (of all ages) in each country had a slope of 0.002 ($p = 0.46$), while for the 0–69 age group the slope was 0.009 ($p = 0.16$).

4. Discussion

In a mixed design synthesis of COVID-19 national seroprevalence studies and mortality data aimed at estimating the IFR of COVID-19 among non-elderly populations, we found that the IFR in the pre-vaccination era is substantially lower than previously calculated (Levin et al., 2020; O’Driscoll et al., 2021; Brazeau et al., 2020; Ioannidis, 2021b; Axfors and Ioannidis, 2022; COVID-19 Forecasting Team, 2022), especially in the younger age strata. Median IFRs show a clear

age-gradient with approximately 3–4-fold increase for each decade but it starts from as low as 0.0003% among children and adolescents and it reaches 0.5% in the 60–69 years old age group. Sensitivity analyses considering all 38 countries with seroprevalence data that were identified in our systematic search showed that median IFR might be up to a third lower than the estimates produced by our main analysis, e.g. approximately 0.03% in the 0–59 years age group and 0.06–0.08% in the 0–69 years old group. Consistent with these estimates, meta-regressions suggest IFR estimates in that range for the global population where 87% of the 0–59 years old people are <50 years old and 80% of the 0–69 years old people are <50 years old.

Our IFR estimates tend to be modestly to markedly lower than several previous calculations (Levin et al., 2020; O’Driscoll et al., 2021; Brazeau et al., 2020; Ioannidis, 2021b; Axfors and Ioannidis, 2022; COVID-19 Forecasting Team, 2022). The most comprehensive prior evaluation of COVID-19 IFR in the pre-vaccination era (COVID-19 Forecasting Team, 2022) suggested a trough IFR at the age of 7 years (0.0023%, 95% uncertainty interval 0.0015–0.0039) and increasing exponentially through 30 years (0.0573%, 0.0418–0.0870), 60 years (1.0035%, 0.7002–1.5727) and older ages. Conversely, our median IFR estimates are roughly 10-fold lower than these previous calculations among children and young adults and 3–6-fold lower among adults 40–69 years old. If we exclude study data from age bins with 0 deaths in our calculations (a justifiable choice, since these estimates of 0% IFR are clearly underestimates), our age-stratified IFR are still approximately 2–5-fold lower than those of (COVID-19 Forecasting Team, 2022) across the entire age range. The previous IFR calculations (Levin et al., 2020; O’Driscoll et al., 2021; Brazeau et al., 2020; Ioannidis, 2021b; Axfors and Ioannidis, 2022; COVID-19 Forecasting Team, 2022) were based on more limited national representative studies’ data and also included data from non-national samples with potentially larger bias. They also probably included mostly hard hit countries that may tend to have the highest IFR estimates. While much of the diversity in IFR across countries is explained by differences in age structure (COVID-19 Forecasting

Table 1

Eligible studies for the main analysis (those countries that have age-stratified COVID-19 death data and seroprevalence information).

Country (first author)	Sampling period	Number tested <60 [<70]	Antibody type(s)	Adjusted seroprevalence <60 [<70] (%)	Adjustments made	COVID-19 deaths <60 [<70] (n)	Population <60 [<70] (n)	IFR in <60 [<70] (%)
Afghanistan (Saeedzai)	6/1/20 to 6/30/20	NA [5168]	IgG/IgM	35.1 [35.2]	NA	355 [576]	37,284,465 [38,341,961]	0.003 [0.004]
Andorra (Royo-Cebrecos)	5/4/20 to 5/28/20	49,355 [55,347]	IgG/IgM	12.3 [12.46]	NA	2 [6]	61,881 [70,384]	0.022 [0.058]
Canada (Tang)	5/1/20 to 9/30/20	5789 [7938]	IgG only	2.12 [2.08]	NA	280 [915]	28,346,618 [33,059,361]	0.039 [0.113]
Czech Republic (Piler)	12/1/20 to 1/31/21	5665 [NA]	IgG only	42.77 [42.77]	NA	565 [2111]	7,908,150 [9,232,767]	0.011 [0.034]
Denmark (Espenhain)	9/11/20 to 12/11/20 (median date 12/16/20)	NA [NA]	IgG/IgM/IgA	4.64 [4.64]	Test sensitivity and specificity using the Rogan-Gladen estimator	36 [129]	4,278,562 [4,933,092]	0.012 [0.036]
England (Ward)	6/20/20 to 7/13/20	77,955*	IgG only	6.76 [6.25]	Test performance, and weighted to account for sample design and for variation in response rate (age, sex, ethnicity, region and deprivation) to be representative of the England population over 18 years	2586 [6425]	42,889,306 [48,870,419]	0.076 [0.179]
Faroe Islands (Petersen)	11/21/20 to 11/30/20	40,467 [46,152]	IgG/IgM/IgA	0.54 [0.63]	NA	0 [0]	40,467 [46,152]	0 [0]
Finland (Melin)	4/13/20 to 1/25/21	NA [4887]	IgG only	0.61 [0.61]	NA	17 [43]	3,934,387 [4,646,712]	0.056 [0.119]
France (Warszawski)	Median date 11/24/20	48,993*	IgG only	7.04 [6.61]	Sample design, non-response, census calibration	1968 [6024]	47,753,753 [55,518,538]	0.039 [0.109]
France (Carrat)	5/4/20 to 9/30/20	40,193 [56,843]	IgG only	6.71 [5.9]	NA	1306 [3684]	47,753,753 [55,518,538]	0.029 [0.079]
Germany (Neuhauser)	10/1/20 to 2/28/21 (median date 11/11/20)	11,302*	IgG only	1.96 [1.96]	Non-response, test performance and seroreversion	903 [2708]	59,792,644 [70,436,786]	0.077 [0.196]
Hungary (Merkely)	5/1/20 to 5/16/20	8088*	IgG only	0.64 [0.64]	Design weighted. Response sample calibrated to known population counts by region, sex, and age categories.	27 [95]	7,076,206 [8,382,638]	0.057 [0.17]
Iceland (Gudbjartsson)	4/27/20 to 6/5/20	NA	IgG/IgM/IgA	0.8 [0.8]	NA	1 [3]	267,524 [305,060]	0.043 [0.113]
Ireland (Heavey)	6/22/20 to 7/16/20	NA	IgG only	1.69 [1.69]	Weighted to adjust for varying response rates in age-sex strata	64 [190]	4,217,964 [4,779,564]	0.073 [0.192]
Israel (Reicher)	6/28/20 to 9/14/20 (median date 7/9/20)	38,673 [47,423]	IgG only	5.18 [4.95]	Age, sex, time period, RT-PCR status, municipal strata, sampling	21 [60]	7,231,052 [7,934,695]	0.004 [0.012]
Italy (Sabbadini)	5/25/20 to 7/15/20	NA	IgG only	2.44 [2.46]	Non-response, region, age, sex, working status, province	1600 [5112]	41,830,101 [49,314,963]	0.135 [0.361]
Japan (Yoshiyama)	6/1/20 to 6/7/20	5156 [6476]	IgG/IgM/IgA	0.13 [0.12]	NA	37 [122]	83,064,470 [98,939,705]	0.033 [0.098]
Jersey (Government of Jersey)	Median date 6/16/20	1077*	IgG/IgM	3.65 [3.65]	NA	1 [4]	77,734 [87,432]	0.032 [0.113]
Lao PDR (Virachith)	8/12/20 to 9/25/20	2082 [NA]	IgG/IgM	4.46 [4.46]	Weighted for complex survey sample design, age and sex	0 [0]	6,781,408 [7,099,379]	0 [0]
Lithuania (Smigelskas)	8/10/20 to 9/10/20	NA	IgG/IgM	1.38 [1.38]	NA	5 [17]	1,974,425 [2,327,236]	0.013 [0.038]
Mexico (Basto-Abreu)	8/18/20 to 11/13/20	NA	IgG/IgM/IgA	25.77 [25.77]	Test performance, and used sampling weights to adjust for selection probabilities and non-response rates (with post-stratification on region, sex and age group)	36,779 [62,926]	114,441,068 [122,706,021]	0.108 [0.172]
Nepal (Government of Nepal)	10/9/20 to 10/22/20 (median date 10/16/20)	NA	IgG/IgM/IgA	13.54 [13.64]	Survey design weights, age	340 [504]	26,615,582 [28,103,660]	0.008 [0.011]
Netherlands (Vos)	6/9/20 to 8/24/20 (median date 6/14/20)	4600 [5817]	IgG only	4.46 [4.56]	Adjusted for survey design, weighted to match the distribution of the general Dutch population (based on sex, age, ethnic background, and degree of urbanization) and controlled for test characteristics	196 [694]	12,576,973 [14,706,474]	0.03 [0.09]
Norway (Eik Anda)	11/25/20 to 2/15/21 (median date 12/20/20)	22,264*	IgG only	0.94 [0.94]	Rake weighting for population estimates of seroprevalence by age, sex, place of birth and county based on individual-level data for the invited	23 [64]	4,159,899 [4,746,055]	0.037 [0.091]

(continued on next page)

Table 1 (continued)

Country (first author)	Sampling period	Number tested <60 [<70]	Antibody type(s)	Adjusted seroprevalence <60 [<70] (%)	Adjustments made	COVID-19 deaths <60 [<70] (n)	Population <60 [<70] (n)	IFR in <60 [<70] (%)	
Oman (Al Abru)	11/8/20 to 11/13/20	NA	IgG only	22.32 [22.32]	sample (participants and non-responders) together with the corresponding distributions from the source population, provided by the Norwegian Population Register. Applied propensity scores for nonresponse adjustment and jackknife replicate weights for the raking procedure. Estimates subsequently corrected for test performance Age group, sex, nationality	553 [930]	4,888,809 [5,031,596]	0.042 [0.068]	
Pakistan (Ahmad)	10/21/20 to 11/8/20	4022 [NA]	IgG/IgM	6.33 [6.33]		NA	3287 [5448]	206,007,412 [214,909,826]	0.02 [0.031]
Portugal (Canto e Castro)	9/8/20 to 10/14/20 (>90% of the test were performed 9/8/20 to 9/20/20)	NA	IgG/IgM/IgA	2.32 [2.32]		Adjusted for test performance, used sample weights and post-stratified by sex to adjust the seroprevalence extrapolating from the strata to the whole population	89 [257]	7,202,167 [8,495,991]	0.04 [0.098]
Slovenia (Poljak)	10/17/20 to 11/10/20	NA	IgG/IgM/IgA	5.32 [5.32]		NA	18 [55]	1,502,217 [1,787,158]	0.015 [0.041]
Spain (Government of Spain)	11/16/20 to 11/29/20	NA	IgG only	9.58 [9.71]		Characteristics of the random subsample of the fourth round	2329 [6593]	34,605,241 [39,945,895]	0.046 [0.111]
USA (Sullivan)	8/9/20 to 12/8/20 (median date 10/30/20)	3481*	IgG/IgM/IgA	16.48 [16.48]		Test performance, design weights	32,487 [73,947]	255,284,698 [293,772,868]	0.077 [0.153]
USA (Kalish)	4/1/20 to 8/4/20 (>90% of the tests were performed 5/10/20 to 7/31/20)	6785 [NA]	IgG/IgM/IgA	4.8 [4.8]		Age, region, sex, urban/rural, race, Hispanic, BRFSS survey response, sensitivity, specificity	16,411 [37,410]	255,284,698 [293,772,868]	0.097 [0.192]

* Number tested <65 years

Team, 2022), additional substantial differences are possible. Another major reason for the discrepancy versus prior calculations is due to the fact that some previous calculations (e.g. ref. 59) have substantially increased their initial IFR estimates by multiplying them for a factor of under-ascertainment of COVID-19 deaths. Aligning evaluations in terms of this methodological difference would bring the estimates closer, but divergence would still be present with our estimates remaining lower. Some other estimates for pre-vaccination IFR agree more with our estimates overall, e.g. 0.107% across all ages combined (Ayoub et al., 2021).

The median IFR estimates should not diminish attention to the large heterogeneity that was observed across different studies and countries. Some of the observed heterogeneity may be data artefacts (e.g. if the number of deaths or seroprevalence are not accurately measured) and some may reflect genuine differences across populations and settings. Fatality risk from COVID-19 is strongly influenced by the presence and severity of comorbidities (Williamson et al., 2020). While this is extremely well documented from population studies, IFR estimates stratified for comorbidity are typically not available in national seroprevalence studies. A national study of blood donors in Denmark has estimated an IFR of only 0.00336% for people <51 years without comorbidity, and 0.281% for people aged 61–69 years old without comorbidity (Erikstrup et al., 2022a). The proportion of people with some comorbidities that are very influential for COVID-19 outcomes such as obesity is very different across different countries, even for the same age groups. For example, obesity affects 42% of the USA population (<https://www.cdc.gov/obesity/data/adult.html>), but the proportion of obese adults is only 2% in Vietnam, 4% in India and <10% in most African countries (). However, also within Africa, obesity affects 0% of Ethiopian women and almost 40% of South African women (Agyemang et al., 2016). Another influential difference is the presence of frail individuals in long-term facilities, where IFRs may be much higher and to what extent these highly vulnerable individuals are infected. Even though the vast majority of frail individuals in long-term care are ≥70 years old, a small proportion are younger and they may account for a substantial proportion of deaths in the non-elderly strata that we examined in the current analysis, especially in some high income countries, but not in others. Other differences in management, health care, overall societal support and concomitant epidemics, e.g. drug overdose (Kuehn, 2021), may have also shaped large differences across countries.

Some limitations should be acknowledged in this work. Data artefacts in the form of measurement errors may have affected the results of some studies included in this analysis, and therefore also the data synthesis. Seroprevalence studies have many caveats (Ioannidis, 2021b) and uncertainty in seroprevalence estimates is larger than conveyed by typical 95% confidence intervals. Overall, however, there is no reason to suggest that over-estimation of seroprevalence is far more or far less common than under-estimation. Among the 40 studies in our evaluation, the Italian national seroprevalence study provided estimates that are very far from any other study. A notable difference that we found in this study is the requirement to isolate after a positive result to the antibody test (Protocollo metodologico per un; Cinnirella et al., 2020). This might have discouraged the participation of people that expected to test positive, thus likely overestimating the IFR (Cinnirella et al., 2020). Outliers are more suspect for bias and inaccuracies, hence, we primarily focused on the median values. For death counts, it is more likely that COVID-19 deaths were under-counted in the first waves, but both over- and under-counting may have occurred to some extent in different settings (Ioannidis, 2021c). Some of the studies that suggest higher estimates of IFR use large corrections for under-counting of deaths (COVID-19 Forecasting Team, 2022; Levin et al., 2022). However, it is unclear whether such large corrections are justified. In particular, for the non-elderly age groups, deaths among young adults and children may be less likely to have been missed, as opposed to deaths of elderly individuals where causal attribution to a single cause can be more difficult

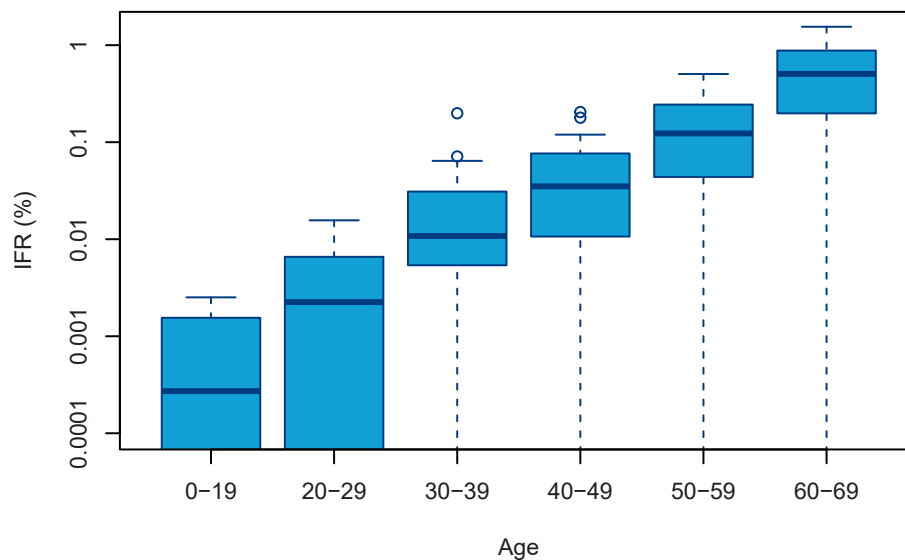


Fig. 2. Box plot of infection fatality rate (IFR) estimates across countries per each specified age bin. Note: The 25th percentile for 0–19 and 20–29 age bins is not shown (0.0000%).

and where even in high income countries under-reporting of COVID-19 may have occurred if testing was not widespread. For example, in the Netherlands, the national statistics service suggests that many COVID-19 deaths may have not been recorded in the first wave; however, these pertained largely to elderly individuals (<https://www.cbs.nl/en-gb/news/2022/30/3-480-covid-19-deaths-in-q1> and last accessed September 29, 2022).

Ratios of median IFRs using 20–29 years as reference group show a steep progression of the risk of dying from COVID-19 with increasing age (proportion ratio is 5.5 for those 30–39 years old, 17.5 for those 40–49 years old, 61.5 for those 50–59 years old, and 253 for those 60–69 years old compared with people 20–29 years old). Even if our median IFR estimates are lower than some previous calculations, this does not mean that COVID-19 could not have had an impact on the non-elderly at the population level, especially when the number of infected people was high. As shown in Appendix Table 3 if 100% of non-elderly people globally were to be infected without having the benefit of vaccination or other potentially beneficial interventions that were developed and implemented later in the pandemic, a total of 4.7–5.3 million deaths of people 0–69 years old are expected worldwide according to our IFR estimates. This includes 32–98 thousand deaths of people 0–29 years old. Three years after the emergence of SARS-CoV-2, the large majority of the global population has indeed been infected at least once (Ioannidis, 2022) and an estimated 44% had been infected even before the advent of the Omicron wave in fall 2021 (COVID-19 Cumulative Infection Collaborators, 2022). If we assume half of the global non-elderly population infected without the benefit of vaccination or other beneficial interventions, this corresponds to 2.3–2.6 million deaths in people 0–69 years old, including 16–49 thousand deaths of people 0–29 years old. These absolute numbers of fatalities are overall probably modestly higher than seasonal flu fatalities over three typical pre-pandemic years (Ioannidis, 2022) when the entire 0–69 year old population is considered, but they are lower than pre-pandemic years when only the younger age strata are considered. For example, Iuliano et al. (2018) estimate 9243–105,690 deaths for children <5 years old per year based on data from 92 countries for seasonal influenza.

Moreover, in terms of absolute counts, the number of hospitalizations and intensive care unit admissions are many times higher than the number of deaths in the non-elderly (Herrera-Espósito and de los

Campos, 2022), resulting in non-negligible clinical and health care burden. However, in depth analysis of population data of health utilization show that for the non-elderly (and even more so for children) the number of hospitalizations was shaped initially in many countries by the precautionary principle, admitting many people to the hospital, especially early in the pandemic, while hospitalization rates declined over time. For example, population-level data from Vojvodina (Medić et al., 2022a) shows that 100% of COVID-19-diagnosed children and adolescents were hospitalized in the first wave (March–June 2020), but the hospitalization rate among COVID-19-diagnosed children and adolescents dropped to 0.8% in 2021. While some poor and disadvantaged locations may have had low numbers of hospitalizations due to lack of hospital beds and/or poor access to care, in many locations excessive hospitalizations may have been driven by irrationally high perceptions of IFR for non-elderly people and they may have caused unnecessary stress and damage to the health care system at large.

Consistent with the very low IFR estimates in non-elderly that we have obtained in this work, excess death calculations (Levitt et al., 2022) show no excess deaths among children and adolescents during the pandemic in almost any country that has highly reliable death registration data. In most of these countries, moreover, excess deaths in non-elderly adults are very limited, but exceptions do occur, most notably in the USA where almost 40% of excess deaths were in populations younger than 65 years (Levitt et al., 2022). This picture is very consistent with the overall very low IFR in the non-elderly, but also the large diversity in the risk profiles of populations in different countries.

Finally, the data that we analyzed pertain to the pre-vaccination period. During 2021 and 2022, the use of vaccination and the advent of new variants plus pre-existing immunity from prior infections resulted in a marked decline in the IFR. Studies in Denmark (Erikstrup et al., 2022b) and Shanghai (Chen et al., 2022) suggest that in 2022, IFRs in vaccinated, previously not infected populations were extremely low. For example, in Denmark, IFR was only 1.6 per 100,000 infections for ages 17–35 and even in ages 61–72 it was only 15.1 per 100,000 infections. In Shanghai, in 2022, IFR was 0.01% among vaccinated individuals aged 40–59 and close to 0% for younger vaccinated people, while it was practically 0% for children and adolescents regardless of vaccination. Other population studies, e.g. in Vojvodina, Serbia (Medić et al., 2022b), suggest that fatality rates may be ten times lower in re-infections versus

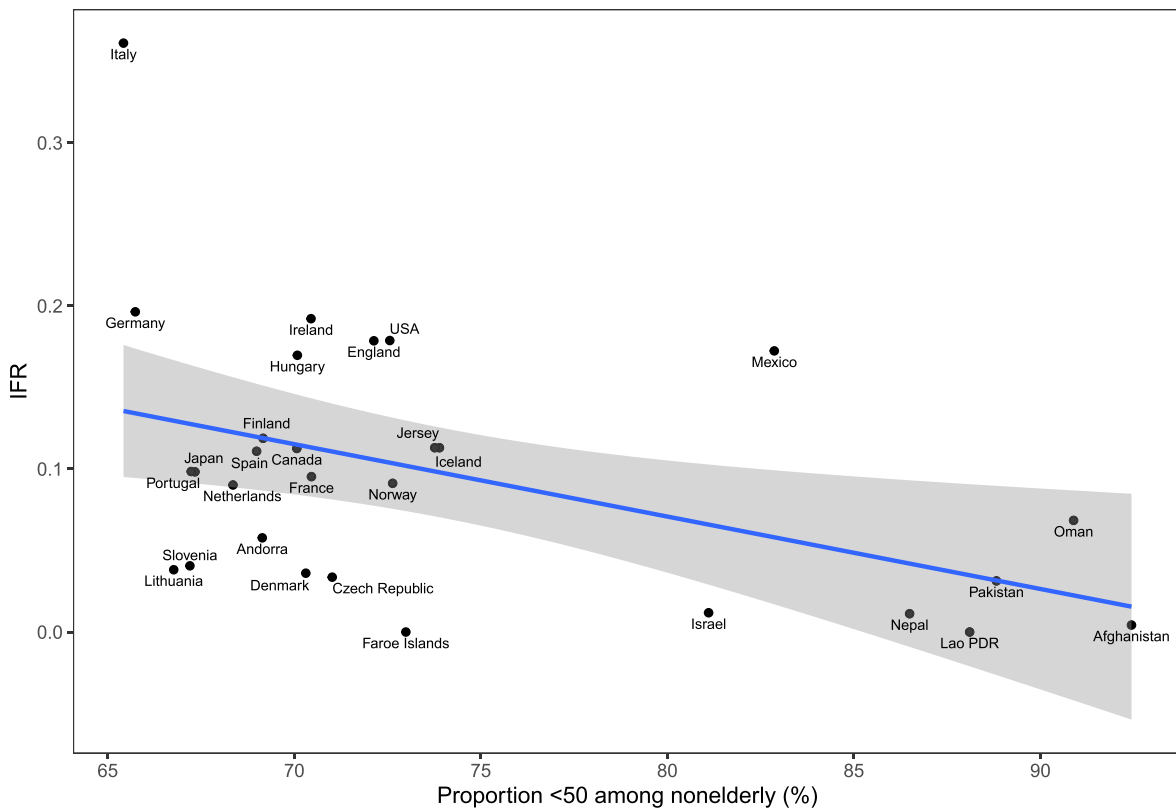
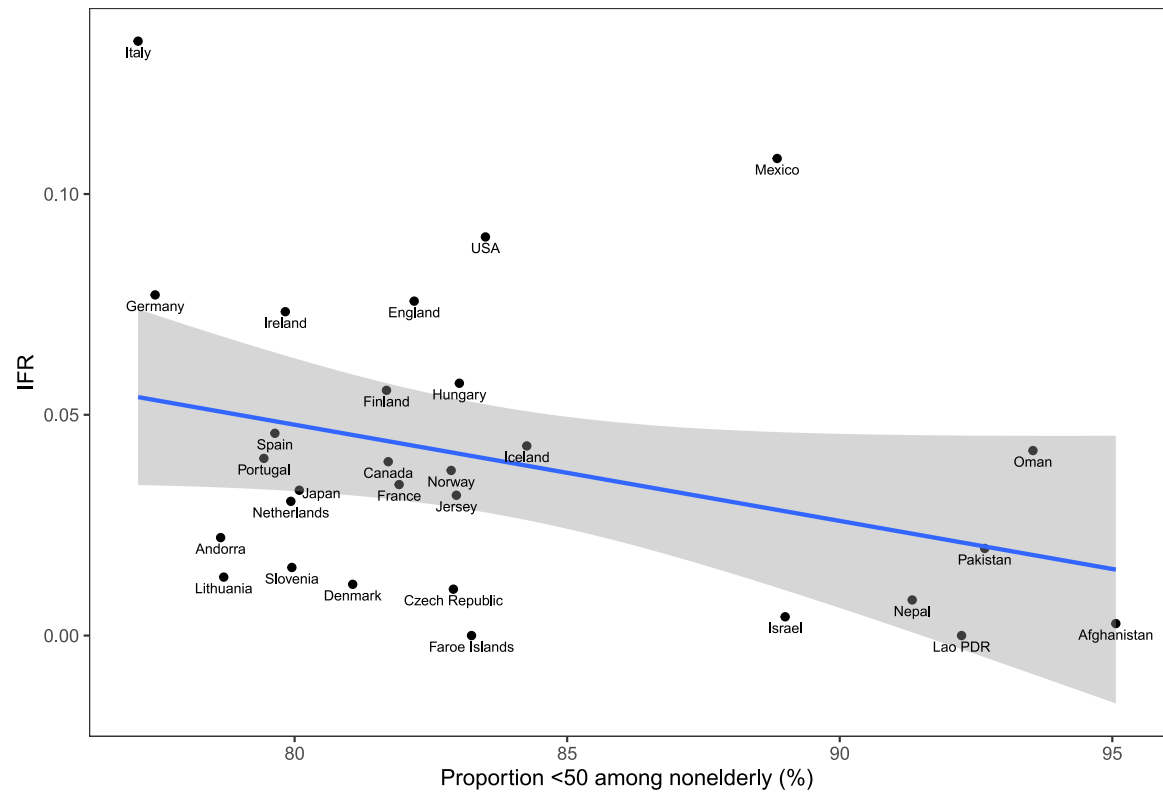


Fig. 3. Meta-regressions of IFR as a function of the proportion of the population <50 years old among (A) among those 0–59 years old and (B) among those 0–69 years old.

primary infections. The relative contributions of vaccination, prior infection and new variants in the IFR decline needs careful study and continued monitoring. However, it is reassuring that even in the wild strains that dominated the first year of the pandemic, the IFR in non-elderly individuals was much lower than previously thought.

Credit author statement

A.M.P.: Conceptualization; Data curation; Formal analysis; Investigation; Writing – original draft; Writing – review & editing. C.A.: Conceptualization; Data curation; Investigation; Writing – review & editing. D.G.C.-I.: Conceptualization; Data curation; Investigation; Writing – review and editing. A.A.: Conceptualization; Data curation; Investigation; Writing – review and editing. J.P.A.I.: Conceptualization; Data curation; Formal analysis; Investigation; Writing – original draft; Writing – review & editing.

Funding

The work of John Ioannidis is supported by an unrestricted gift from Sue and Bob O'Donnell. The work of Angelo Maria Pezzullo in this research has been supported by the European Network Staff Exchange for Integrating Precision Health in the Healthcare Systems project (Marie Skłodowska-Curie Research and Innovation Staff Exchange no. 823995). Cathrine Axfors has received funding outside this work from the Knut and Alice Wallenberg Foundation's Postdoctoral Fellowship (KAW, 2019.0561) and postdoctoral grants from Uppsala University (E o R Börjesons stiftelse; Medicinska fakultetens i Uppsala stiftelse för psykiatrisk och neurologisk forskning), The Sweden-America Foundation, Foundation Blanceflor, Swedish Society of Medicine, and Märta och Nicke Nasvells fond. The funders had no role in the design and conduct of the study; collection, management, analysis, and interpretation of the data; preparation, review, or approval of the manuscript; or decision to submit the manuscript for publication.

Ethical approval

Not applicable.

Declaration of competing interest

The authors declare that they have no known competing financial interests or personal relationships that could have appeared to influence the work reported in this paper.

Data availability

The protocol, data, and code used for this analysis will be made available at the Open Science Framework upon publication: <https://osf.io/xvupr>.

Appendix A. Supplementary data

Supplementary data to this article can be found online at <https://doi.org/10.1016/j.envres.2022.114655>.

References

<https://worldpopulationreview.com/country-rankings/obesity-rates-by-country>.
Abdul-Raheem, R., Moosa, S., Waheed, F., Aboobakuru, M., Ahmed, I.N., Rafeeg, F.N., Saeed, M., 2021. A sero-epidemiological study after two waves of the COVID-19 epidemic. Dec 26 Asian Pac. J. Allergy Immunol. <https://doi.org/10.12932/AP-040721-1177>. Epub ahead of print. PMID: 34953474.
Adam, D., 2022. The pandemic's true death toll: millions more than official counts. *Nature* 601 (7893), 312–315. Jan.
Agyemang, C., et al., 2016. Chapter 4. Obesity in sub-saharan Africa. In: Ahima, R.S. (Ed.), *Metabolic Syndrome*. Springer International Publishing, Switzerland. https://link.springer.com/content/pdf/10.1007/978-3-319-11251-0_5.pdf.

Ahmad, A.M., Shahzad, K., Masood, M., Umar, M., Abbasi, F., Hafeez, A., 2022. COVID-19 seroprevalence in Pakistan: a cross-sectional study. Apr 6 *BMJ Open* 12 (4), e055381. <https://doi.org/10.1136/bmjopen-2021-055381>. PMID: 35387815; PMCID: PMC8987211.
Al-Abri, S.S., Al-Wahaibi, A., Al-Kindi, H., Kurup, P.J., Al-Maqbali, A., Al-Mayahi, Z., Al-Tobi, M.H., Al-Katheri, S.H., Albusaidi, S., Al-Sukaiti, M.H., Al Balushi, A.Y.M., Abdelgadir, I.O., Al-Shehi, N., Morkos, E., Al-Maani, A., Al-Rawahi, B., Alyaquobi, F., Alqayoudhi, A., Al-Harthy, K., Al-Khalili, S., Al-Rashdi, A., Al-Shukri, I., Al Ghafri, T. S., Al-Hashmi, F., Al Jassasi, S.M., Alshaqsi, N., Mitra, N., Al Aamry, H.S., Shah, P., Al Marbouai, H.H., Al Araimi, A.H., Kair, I.M., Al Manji, A.M., Almallak, A.S., Al Alawi, F.K., Vaidya, V., Muqetullah, M., Alrashdi, H., Al Jamoudi, S.S.N., Alshaqsi, A., Al Sharji, A., Al Shukeiri, H., Al-Abri, B., Al-Rawahi, S., Al-Lamki, S.H., Al-Manji, A., Al-Jardani, A., 2021. Seroprevalence of SARS-CoV-2 antibodies in the general population of Oman: results from four successive nationwide sero-epidemiological surveys. *Nov Int. J. Infect. Dis.* 112, 269–277. <https://doi.org/10.1016/j.ijid.2021.09.062>. Epub 2021 Sep 30. PMID: 34601146; PMCID: PMC8482550.
Anda, E.E., Braaten, T., Borch, K.B., Nøst, T.H., Chen, S.L.F., Lukic, M., Lund, E., Forland, F., Leon, D.A., Winje, B.A., Kran, A.B., Kalager, M., Johansen, F.L., Sandanger, T.M., 2022. Seroprevalence of antibodies against SARS-CoV-2 in the adult population during the pre-vaccination period, Norway, winter 2020/21. *Mar Euro Surveill.* 27 (13), 2100376. <https://doi.org/10.2807/1560-7917.ES.2022.27.13.2100376>. PMID: 35362405 PMC8973017.
Arora, R.K., Joseph, A., Van Wyk, J., Rocco, S., Atmaja, A., May, E., et al., 2020. SeroTracker: a global SARS-CoV-2 seroprevalence dashboard. *Lancet Infect. Dis.* S1473–3099 (20), 30631–30639.
Austria, Statistik. COVID-19 Prävalenz und Seroprävalenz Kurzbericht. Available from: http://www.statistik.at/wcm/idc/idclp?IdcService=GET_PDF_FILE&DocName=124957.
Axfors, C., Ioannidis, J.P.A., 2022. Infection-fatality rate of COVID-19 in community-dwelling elderly populations. *Eur. J. Epidemiol.* 37 (3), 235–249. Mar.
Axfors, C., Pezzullo, A.M., Contopoulos-Ioannidis, D.G., Apostolatos, A., Ioannidis, J.P. A., 2022. Differential COVID-19 infection rates in children, adults, and elderly: evidence from 38 pre-vaccination national seroprevalence studies. *medRxiv* 6, 22277034. <https://doi.org/10.1101/2022.06.28.22277034>, 28.
Ayoub, H.H., Mumtaz, G.R., Seedat, S., Makhoul, M., Chemaitelly, H., Abu-Raddad, L.J., 2021. Estimates of global SARS-CoV-2 infection exposure, infection morbidity, and infection mortality rates in 2020. *Glob Epidemiol* 3, 100068. Nov.
Baillie, C.R., Tseng, Y.Y., Carolan, L., et al., 2022. Trend in Sensitivity of SARS-CoV-2 Serology One Year after Mild and Asymptomatic COVID-19: Unpacking Potential Bias in Seroprevalence Studies. In: *Clin Infect Dis.* Jan 13:ciac020.
Basto-Abreu, A., Carnalla, M., Torres-Ibarra, L., Romero-Martínez, M., Martínez-Barnetche, J., López-Martínez, I., Aparicio-Antonio, R., Shamah-Levy, T., Alpuche-Aranda, C., Rivera, J.A., Barrientos-Gutierrez, T., ENSANUT-COVID collaborators, 2022. Nationally representative SARS-CoV-2 antibody prevalence estimates after the first epidemic wave in Mexico. Feb 1. In: *Nat Commun*, vol. 13. PMCID, p. 589. <https://doi.org/10.1038/s41467-022-28232-9>. PMID: 35105873. PMC8807586.
Bellizzi, S., Alsawalha, L., Sheikh Ali, S., Sharkas, G., Muthu, N., Ghazo, M., Hayajneh, W., Profili, M.C., Obeidat, N.M., 2021. A three-phase population based sero-epidemiological study: assessing the trend in prevalence of SARS-CoV-2 during COVID-19 pandemic in Jordan. *One Health* 13, 100292. <https://doi.org/10.1016/j.onehlt.2021.100292>. PMID: 34295958. Jul 10 PMC8272624.
Brazeau, N., Verity, R., Jenks, S., et al., 2020. COVID-19 Infection Fatality Ratio: Estimates from Seroprevalence. *Imperial College London*, pp. 10–29.
Canto E Castro, L., Gomes, A., Serrano, M., Pereira, A.H.G., Ribeiro, R., Napoleão, P., Domingues, I., Silva, C., Fanczal, J., Afonso, A., Lopes, A., Toader, I., de Sousa, M.J. R., de Sousa, J.G.R., de Sousa, G., Mota, M.M., Silva-Santos, B., Veldhoen, M., Ribeiro, R.M., 2022. Longitudinal SARS-CoV-2 seroprevalence in Portugal and antibody maintenance 12 months after infection. *Jan Eur. J. Immunol.* 52 (1), 149–160. <https://doi.org/10.1002/eji.202149619>. Epub 2021 Nov 10. PMID: 34695227 PMC8646574.
Carrat, F., Lapidus, N., Ninove, L., Blanché, H., Rahib, D., Saba Villarreal, P.M., Touvier, M., Severi, G., Zins, M., Deleuze, J.F., de Lamballerie, X., SAPRIS-SERO study group, 2022. Age, COVID-19-like Symptoms and SARS-CoV-2 Seropositivity Profiles after the First Wave of the Pandemic in France. *Infection*, Feb, vol. 50. PMCID, pp. 257–262. <https://doi.org/10.1007/s15010-021-01731-5>. Epub 2021 Nov 25. PMID: 34822130 PMC8614216.
Chen, X., Yan, X., Sun, K., Zheng, N., Sun, R., Zhou, J., Deng, X., Zhuang, T., Cai, J., Zhang, J., Ajelli, M., Yu, H., 2022. Estimation of Disease Burden and Clinical Severity of COVID-19 Caused by Omicron BA.2 in Shanghai, February-June 2022. *medRxiv [Preprint]*. Jul 12:2022.07.11.22277504.
Chimeddorj, B., Mandakh, U., Le, L.V., Bayartsogt, B., Deleg, Z., Enebish, O., Altanbayar, O., Magvan, B., Gantumur, A., Byambaa, O., Enebish, G., Saindoo, B.E., Davaadorj, M., Amgalanbaatar, A., Enkhugs, K., Munkhbayar, U., Bayanjargal, B., Badamsambuu, T., Dashtseren, M., Narmandakh, Z., Togoo, K., Boldbaatar, E.A., Bat-Erdene, A., Mukhtar, Y., Shagdarsuren, O.E., Ganbat, M., Batjargal, O., Bavuusuren, B., Batchuluun, B., Zulumkh, G., Byambatsogt, G., Nyamdavaa, K., Dalkh, T., Boldbaatar, D., Tseren, T., Gantulga, D., Damdinbazar, O., Vanchin, B., Subissi, L., Bergeri, I., Dambadarjaa, D., Pagbajabyn, N., Greif, G., Erkhembayar, R., 2021. SARS-CoV-2 seroprevalence in Mongolia: results from a national population survey. *Dec Lancet Reg Health West Pac* 17, 100317. <https://doi.org/10.1016/j.lanwpc.2021.100317>. Epub 2021 Nov 23. PMID: 34841381 PMC8609908.
Cinnirella, A., Maffeo, M., Gallana, C., Gramegna, M., Tirani, M., Toso, C., Crottoni, L., Castaldi, S., Leoni, O., Blaco, R., Cereda, D., 2020. Analisi dei dati raccolti tramite test sierologici per la ricerca di anticorpi specifici anti-SARS-CoV-2 in regione Lombardia. In: XLIV Convegno AIE – 2020. Associazione Italiana di Epidemiologia,

- p. 102. November 2020. Available from: <https://www.epidemiologia.it/xlivconvegnoaie2020/>.
- Comas-Herrera A, Zalakaín J, Lemmon E, Henderson D, Litwin C, Hsu A, et al. Mortality Associated with COVID-19 in Care Homes: International Evidence. Article in LTCovid.org, International Long-Term Care Policy Network, CPEC-LSE, 14 October 2020.
- COVID-19 Cumulative Infection Collaborators, 2022. Estimating global, regional, and national daily and cumulative infections with SARS-CoV-2 through Nov 14, 2021: a statistical analysis. *Lancet* 399 (10344), 2351–2380. Jun 25.
- COVID-19 Forecasting Team, 2022. Variation in the COVID-19 infection-fatality ratio by age, time, and geography during the pre-vaccine era: a systematic analysis. *Lancet* 399 (10334), 1469–1488. Apr 16.
- de España, Gobierno, 2020. Estudio ENE-COVID: Cuarta ronda: Estudio nacional de sero-epidemiología de la infección por SARS-CoV-2 en España. Gobierno de España Ministerio de Ciencia e Innovación, Madrid. Dec 15. Available from: <https://www.sanidad.gob.es/gabinetePrensa/notaPrensa/pdf/15.12151220163348113.pdf>.
- Erikstrup, C., Laksafoss, A.D., Gladov, J., Kaspersen, K.A., Mikkelsen, S., Hindhede, L., Boldsen, J.K., Jørgensen, S.W., Ethelberg, S., Holm, D.K., Bruun, M.T., Nissen, J., Schwinn, M., Brodersen, T., Mikkelsen, C., Sækmose, S.G., Sørensen, E., Harritsøj, L.H., Aagaard, B., Dinh, K.M., Busch, M.P., Jørgensen, C.S., Krause, T.G., Ullum, H., Ostrowski, S.R., Espenhain, L., Pedersen, O.B.V., 2022a. Seroprevalence and infection fatality rate of the SARS-CoV-2 Omicron variant in Denmark: a nationwide serosurveillance study. *Lancet Reg Health Eur* 21, 100479. Oct.
- Erikstrup, C., Laksafoss, A.D., Gladov, J., Kaspersen, K.A., Mikkelsen, S., Hindhede, L., Boldsen, J.K., Jørgensen, S.W., Ethelberg, S., Holm, D.K., Bruun, M.T., Nissen, J., Schwinn, M., Brodersen, T., Mikkelsen, C., Sækmose, S.G., Sørensen, E., Harritsøj, L.H., Aagaard, B., Dinh, K.M., Busch, M.P., Jørgensen, C.S., Krause, T.G., Ullum, H., Ostrowski, S.R., Espenhain, L., Pedersen, O.B.V., 2022b. Seroprevalence and infection fatality rate of the SARS-CoV-2 Omicron variant in Denmark: a nationwide serosurveillance study. *Oct Lancet Reg Health Eur* 21, 100479.
- Espenhain, L., Tribler, S., Sværke Jørgensen, C., Holm Hansen, C., Wolff Sönksen, U., Ethelberg, S., 2021. Prevalence of SARS-CoV-2 antibodies in Denmark: nationwide, population-based seroepidemiological study. *Jul. In: Eur J Epidemiol*, vol. 36. PMID, pp. 715–725. <https://doi.org/10.1007/s10654-021-00796-8>. Epub 2021 Aug 22. PMID: 34420152 PMC8380416.
- Finnish Institute for Health and Welfare. Report of THL serological population study of the coronavirus epidemic. Available from: https://www.thl.fi/roko/cov-vaestoseologia/sero_report_weekly_en.html.
- French Institute for Demographic Studies – INED. <https://dc-covid.site.ined.fr/en/data/>.
- Government of Jersey. SARS-CoV-2: Prevalence of antibodies in Jersey. St Helier, Statistics Jersey May 5. Available from: <https://www.gov.je/SiteCollectionDocuments/Government%20and%20administration/R%20Prevalence%20of%20antibodies%202020508%20SJ.pdf>.
- Government of Nepal, 2021. Enhanced Surveillance on Sero-Prevalence of SARS-CoV-2 in General Population. Government of Nepal Ministry of Health and Population, Kathmandu. Apr 4. Available from: https://mohp.gov.np/attachments/article/708/First%20sero-prevalence%20final%20report_04-04-2021.pdf.
- Gudbjartsson, D.F., Norddahl, G.L., Melsted, P., Gunnarsdottir, K., Holm, H., Eyrthorsson, E., Arnthorsson, A.O., Helgason, D., Bjarnadottir, K., Ingvarsson, R.F., Thorsteinsdottir, B., Kristjansdottir, S., Birgisdottir, K., Kristinsdottir, A.M., Sigurdsson, M.I., Arnardottir, G.A., Ivarsdottir, E.V., Andresdottir, M., Jonsson, F., Agustsdottir, A.B., Berglund, J., Eiriksdottir, B., Fridriksdottir, R., Gardarsdottir, E. E., Gottfredsson, M., Gretarsdottir, O.S., Gudmundsdottir, S., Gudmundsson, K.R., Gunnarsdottir, T.R., Gylfason, A., Helgason, A., Jonsson, B.O., Jonasdottir, A., Jonsson, H., Kristjansson, T., Kristinnsson, K.G., Magnusdottir, D.N., Magnusson, O.T., Olafsdottir, L.B., Rognvaldsson, S., le Roux, L., Sigmundsdottir, G., Sigurdsson, A., Sveinbjornsson, G., Sveinsdottir, K.E., Sveinsdottir, M., Thorarensen, E.A., Thorbjornsson, B., Thordardottir, M., Saemundsdottir, J., Kristjansson, S.H., Josefsdottir, K.S., Masson, G., Georgsson, G., Kristjansson, M., Moller, A., Palsson, R., Gudnason, T., Thorsteinsdottir, U., Jonsdottir, I., Sulem, P., Stefansson, K., 2020. Humoral immune response to SARS-CoV-2 in Iceland. *Oct 29 N. Engl. J. Med.* 383 (18), 1724–1734. <https://doi.org/10.1056/NEJMoa2026116>. Epub 2020 Sep 1. PMID: 32871063; PMID: PMC7494247.
- Heavey, L., Garvey, P., Colgan, A.M., Thornton, L., Connell, J., Roux, T., Hunt, M., O'Callaghan, F., Culklin, F., Keogan, M., O'Connor, N., O'Sullivan, M.B., O'Sullivan, S., Tait, M., De Gascun, C.F., Igoe, D., 2021. The study to investigate COVID-19 infection in people living in Ireland (SCOPI): a seroprevalence study, June to July 2020. *Dec. In: Euro Surveill*, vol. 26. PMID, 2001741. <https://doi.org/10.2807/1560-7917.ES.2021.26.48.2001741>. PMID: 34857067 PMC8641066.
- Herrera-Espinoza, D., de los Campos, G., 2022. Age-specific rate of severe and critical SARS-CoV-2 infections estimated with multi-country seroprevalence studies. *BMC Infect. Dis.* 22, 311.
- Hoballah, A., El Haidari, R., Siblany, G., Abdel Sater, F., Mansour, S., Hassan, H., Abou-Abbas, L., 2022. SARS-CoV-2 antibody seroprevalence in Lebanon: findings from the first nationwide serosurvey. *Jan 10 BMC Infect. Dis.* 22 (1), 42. <https://doi.org/10.1186/s12879-022-07031-z>. PMID: 35012464; PMID: PMC8744021. <https://www.cbs.nl/en-gb/news/2022/30/3-480-covid-19-deaths-in-q1>. (Accessed 29 September 2022) last accessed. <https://www.cdc.gov/obesity/data/adult.html>.
- Ioannidis, J.P.A., 2021a. Infection fatality rate of COVID-19 inferred from seroprevalence data. *Bull. World Health Organ.* 99, 19–33F.
- Ioannidis, J.P.A., 2021b. Reconciling Estimates of Global Spread and Infection Fatality Rates of COVID-19: an Overview of Systematic evaluations. *Eur J Clin Invest*, vol. 51, e13554, 5.
- Ioannidis, J.P., 2021c. Over- and under-estimation of COVID-19 deaths. *Eur. J. Epidemiol.* 36 (6), 581–588. Jun.
- Ioannidis, J.P., 2022. The end of the COVID-19 pandemic. *Eur. J. Clin. Invest.* 52 (6), e13782.
- Ioannidis, J.P.A., Axfors, C., Contopoulos-Ioannidis, D.G., 2020. Population-level COVID-19 mortality risk for non-elderly individuals overall and for non-elderly individuals without underlying diseases in pandemic epicenters. *Environ. Res.* 188, 109890.
- Iuliano, A.D., Roguski, K.M., Chang, H.H., et al., 2018. Estimates of global seasonal influenza-associated respiratory mortality: a modelling study. *Lancet* 391 (10127), 1285–1300.
- Kalish, H., Klumpp-Thomas, C., Hunsberger, S., Baus, H.A., Fay, M.P., Siripong, N., Wang, J., Hicks, J., Mehalko, J., Travers, J., Drew, M., Pauly, K., Spathies, J., Ngo, T., Adusei, K.M., Karkanitsa, M., Croker, J.A., Li, Y., Graubard, B.I., Czajkowski, L., Belliveau, O., Chairez, C., Snead, K.R., Frank, P., Shunmugavel, A., Han, A., Giurgea, L.T., Rosas, L.A., Bean, R., Athota, R., Cervantes-Medina, A., Gouzoulis, M., Heffelfinger, B., Valenti, S., Caldararo, R., Kolberg, M.M., Kelly, A., Simon, R., Shafiq, S., Wall, V., Reed, S., Ford, E.W., Lokwani, R., Denson, J.P., Messing, S., Michael, S.G., Gillette, W., Kimberly, R.P., Reis, S.E., Hall, M.D., Esposito, D., Memoli, M.J., Sadtler, K., 2021. Undiagnosed SARS-CoV-2 seropositivity during the first 6 months of the COVID-19 pandemic in the United States. *Jul 7 Sci. Transl. Med.* 13 (601), eabh3826. <https://doi.org/10.1126/scitranslmed.abb3826>. Epub 2021 Jun 22. PMID: 34158410 PMC8432952.
- Khalagi, K., Gharibzadeh, S., Khalili, D., Mansournia, M.A., Mirab Samiee, S., Aghamohamadi, S., Mir-Mohammad-Ali Roodaki, M., Hashemi, M.M., Tayeri, K., Namdari Tabar, H., Azadmanesh, K., Tabrizi, J.S., Mohammad, K., Hajjipour, F., Namaki, S., Raesi, A., Ostovar, A., 2021. Prevalence of COVID-19 in Iran: results of the first survey of the Iranian COVID-19 Serological Surveillance programme. *Nov Clin. Microbiol. Infect.* 27, 1666–1671. <https://doi.org/10.1016/j.cmi.2021.06.002>. Epub 2021 Jun 7. PMID: 34111585 PMC8226066.
- Kuehn, B.M., 2021. Massive costs of the US opioid epidemic in lives and dollars. *JAMA* 325 (20), 2040. May 25.
- Levin, A.T., Hanage, W.P., Owusu-Boaitey, N., Cochran, K.B., Walsh, S.P., Meyerowitz-Katz, G., 2020. Assessing the age specificity of infection fatality rates for COVID-19: systematic review, meta-analysis, and public policy implications. *Eur. J. Epidemiol.* 35 (12), 1123–1138.
- Levin, A.T., Owusu-Boaitey, N., Pugh, S., Fosdick, B.K., Zwi, A.B., Malani, A., Soman, S., Besançon, L., Kashnitsky, I., Ganesh, S., McLaughlin, A., Song, G., Uhm, R., Herrera-Espinoza, D., de los Campos, G., Peçanha Antonio, A.C.P., Tadese, E.B., Meyerowitz-Katz, G., 2022. Assessing the burden of COVID-19 in developing countries: systematic review, meta-analysis and public policy implications. *BMJ Glob Health* 7 (5), e008477. May.
- Levitt, M., Zonta, F., Ioannidis, J.P.A., 2022. Comparison of pandemic excess mortality in 2020–2021 across different empirical calculations. *Environ. Res.* 213, 113754. Oct.
- Medić, S., Anastassopoulou, C., Lozanov-Crvenković, Z., Dragnić, N., Petrović, V., Ristić, M., Pustahija, T., Tsakris, A., Ioannidis, J.P.A., 2022a. Incidence, Risk and Severity of SARS-CoV-2 Reinfections in Children and Adolescents: a Population-Level Study between March 2020 and July 2022. *In: medRxiv*, 22280690, 10.09.
- Medić, S., Anastassopoulou, C., Lozanov-Crvenković, Z., Vuković, V., Dragnić, N., Petrović, V., Ristić, M., Pustahija, T., Gokjović, Z., Tsakris, A., Ioannidis, J.P.A., 2022b. Risk and severity of SARS-CoV-2 reinfections during 2020–2022 in Vojvodina, Serbia: a population-level observational study. *Lancet Reg Health Eur* 20, 100453. Sep.
- Merkely, B., Szabó, A.J., Kosztin, A., Berényi, E., Sebestyén, A., Lengyel, C., Merkely, G., Karády, J., Várkonyi, I., Papp, C., Miseta, A., Betlehem, J., Burián, K., Csóka, I., Vásárhelyi, B., Ludwig, E., Prinz, G., Sinkó, J., Hankó, B., Varga, P., Fülöp, G.A., Mag, K., Vokó, Z., 2020. Hungarian CoronaVirus-19 Epidemiological Research (H-UNCOVER) investigators. Novel coronavirus epidemic in the Hungarian population. Aug a cross-sectional nationwide survey to support the exit policy in Hungary. *Geroscience* 42, 1063–1074. <https://doi.org/10.1007/s11357-020-00226-9>. Epub 2020 Jul 17. PMID: 32677025 PMC7366154.
- Murhekar, M.V., Bhatnagar, T., Thangaraj, J.W.V., Saravanakumar, V., Kumar, M.S., Selvaraju, S., Rade, K., Kumar, C.P.G., Sabarinathan, R., Turuk, A., Asthana, S., Balachandrar, R., Bangar, S.D., Bansal, A.K., Chopra, V., Das, D., Deb, A.K., Devi, K. R., Dhikav, V., Dwivedi, G.R., Khan, S.M.S., Kumar, M.S., Laxmaiah, A., Madhukar, M., Mahapatra, A., Rangaraju, C., Turuk, J., Yadav, R., Andhalkar, R., Arunraj, K., Bharadwaj, D.K., Bharti, P., Bhattacharya, D., Bhat, J., Chahal, A.S., Chakraborty, D., Chaudhury, A., Deval, H., Dhattrak, S., Dyalal, R., Elantamilan, D., Giridharan, P., Haq, I., Hudda, R.K., Jagjeevan, B., Kalliath, A., Kanungo, S., Krishnan, N.N., Kshatri, J.S., Kumar, A., Kumar, N., Kumar, V.G.V., Ggjn, Lakshmi, Mehta, G., Mishra, N.K., Mitra, A., Nagbhushanam, K., Nimmathota, A., Nirmala, A. R., Pandey, A.K., Prasad, G.V., Qurieshi, M.A., Reddy, S.D., Robinson, A., Sahay, S., Saxena, R., Sekar, K., Shukla, V.K., Singh, H.B., Singh, P.K., Singh, P., Singh, R., Srinivasan, N., Varma, D.S., Viramgami, A., Wilson, V.C., Yadav, S., Yadav, S., Zaman, K., Chakrabarti, A., Das, A., Dhaliwal, R.S., Dutta, S., Kant, R., Khan, A.M., Narain, K., Narasimhaiah, S., Padmapriyadarshini, C., Pandey, K., Pati, S., Patil, S., Rajkumar, H., Ramarao, T., Sharma, Y.K., Singh, S., Panda, S., Reddy, D.C.S., Bhargava, B., ICMR Serosurveillance Group, 2021. SARS-CoV-2 seroprevalence among the general population and healthcare workers in India, December 2020–January 2021. *Jul Int. J. Infect. Dis.* 108, 145–155. <https://doi.org/10.1016/j.ijid.2021.05.040>. Epub 2021 May 19. PMID: 34022338 PMC8132496.
- Neuhauser, H., Rosario, A.S., Butschalowsky, H., Haller, S., Hoebel, J., Michel, J., Nitsche, A., Poethko-Müller, C., Prütz, F., Schlaud, M., Steinhilber, H.W., 2021. Germany's low SARS-CoV-2 seroprevalence confirms effective containment in 2020: results of the nationwide RKI-SOEP study. *medRxiv*.
- O'Driscoll, M., Dos Santos, G.R., Wang, L., Cummings, D.A.T., Azman, A.S., Paireau, J., et al., 2021. Age-specific mortality and immunity patterns of SARS-CoV-2. *Nature* 590 (7844), 140–145. <https://doi.org/10.1038/s41586-020-2918-0>.

- Owusu-Boaitey, N., Russell, T.W., Meyerowitz-Katz, G., Levin, A.T., Herrera-Esposito, D., 2022. Dynamics of SARS-CoV-2 Seroassay Sensitivity: a Systematic Review and Modelling Study. medRxiv, 22279731. <https://doi.org/10.1101/2022.09.08.22279731>, 09.08.
- Petersen, M.S., Strøm, M., Fjallsbak, J.P., Hansen, J.L., Larsen, S., Eliassen, E.H., Johansen, M., Veyhe, A.S., Kristiansen, M.F., Weihe, P., 2020. Low Seroprevalence Among Undetected COVID-19 Cases, Faroe Islands. November. In: *Emerg Infect Dis*, vol. 28. PMID, pp. 242–244. <https://doi.org/10.3201/eid2801.210917>. Epub 2021 Nov 10. PMID: 34757895 PMC8714219.
- Piler, P., Thon, V., Andrišková, L., Doležel, K., Kostka, D., Pavlík, T., Dušek, L., Píkhart, H., Bobák, M., Matic, S., Klánová, J., 2022. Nationwide Increases in Anti-SARS-CoV-2 IgG Antibodies between October 2020 and March 2021 in the Unvaccinated Czech Population. *Commun Med (Lond)*. Mar 1, vol. 2. PMID, p. 19. <https://doi.org/10.1038/s43856-022-00080-0>. PMID:35603283. PMC9053194.
- Poljak, M., Oštrbenk Valenčak, A., Štrumbelj, E., Maver Vodičar, P., Vehovar, V., Resman Rus, K., Korva, M., Knap, N., Seme, K., Petrovec, M., Zupan, B., Demšar, J., Kurdiša, S., Avšič Županc, T., 2021. Seroprevalence of severe acute respiratory syndrome coronavirus 2 in Slovenia: results of two rounds of a nationwide population study on a probability-based sample, challenges and lessons learned. *J. Clin. Microbiol. Infect.* 27 (7), PMC8064903. <https://doi.org/10.1016/j.cmi.2021.03.009>. Epub 2021 Apr 7. PMID: 33838303 1039.e1-1039.e7.
- Popova, A.Y., Smirnov, V.S., Andreeva, E.E., Babura, E.A., Balakhonov, S.V., Bashketova, N.S., Bugorkova, S.A., Bulanov, M.V., Valeullina, N.N., Vetrov, V.V., Goryaev, D.V., Detkovskaya, T.N., Ezhlova, E.B., Zaitseva, N.N., Istoriik, O.A., Kovalchuk, I.V., Kozlovskikh, D.N., Kombarova, S.Y., Kurganova, O.P., Lomovtsev, A.E., Lukicheva, L.A., Lyalina, L.V., Melnikova, A.A., Mikailova, O.M., Noskov, A.K., Noskova, L.N., Oglezneva, E.E., Osmolovskaya, T.P., Patyashina, M.A., Penkovskaya, N.A., Samoilo, L.V., Stepanova, T.F., Trotsenko, O.E., Totolian, A.A., 2021. SARS-CoV-2 seroprevalence structure of the Russian population during the COVID-19 pandemic. *Aug 19 Viruses* 13 (8), 1648. <https://doi.org/10.3390/v13081648>. PMID:34452512. PMC8402751.
- Protocollo metodologico per un'indagine di siero-prevalenza sul SARS-CoV-2 condotta dal Ministero della salute e dall'Istat. Available from: https://www.salute.gov.it/imgs/C_17_campagneComunicazione_146_0_file.pdf.
- Reicher, S., Ratzon, R., Ben-Sahar, S., Hermoni-Alon, S., Mossinson, D., Shenhar, Y., Friger, M., Lustig, Y., Alroy-Preis, S., Anis, E., Sadetzki, S., Kaliner, E., 2021. Nationwide seroprevalence of antibodies against SARS-CoV-2 in Israel. *Jul. In: Eur J Epidemiol*, vol. 36. PMID, pp. 727–734. <https://doi.org/10.1007/s10654-021-00749-1>. Epub 2021 Apr 21. PMID: 33884542 PMC8059683.
- Riffe, T., Acosta, E., the CoverAGE-DB team, 2021. Data Resource Profile: COVERAGE-DB: a global demographic database of COVID-19 cases and deaths. *Int. J. Epidemiol.* 50, 390. <https://doi.org/10.1093/ije/dyab027>, 390f.
- Rogan, W.J., Gladen, B., 1978. Estimating prevalence from the results of a screening test. *Am. J. Epidemiol.* 107 (1), 71–76.
- Royo-Cebrecos, C., Vilanova, D., López, J., Arroyo, V., Pons, M., Francisco, G., Carrasco, M.G., Piqué, J.M., Sanz, S., Dobaño, C., García-Basteiro, A.L., 2021. Mass SARS-CoV-2 Serological Screening, a Population-Based Study in the Principality of Andorra. *Lancet Reg Health Eur*. May 21, vol. 5. PMID, 100119. <https://doi.org/10.1016/j.lanepe.2021.100119>. PMID: 34557824 PMC8454851.
- Sabbadini, L.L., 2020. Primi risultati dell'indagine di seroprevalenza SARS-CoV-2. Istituto Nazionale di Statistica, Roma. Aug 3. Available from: <https://www.istat.it/it/files//2020/08/ReportPrimiRisultatiIndagineSiero.pdf>.
- Saeedzai, S.A., Osmani, A., Noormal, B., 2020. Prevalence of COVID-19 and its Related Deaths in Afghanistan: a Nationwide, Population-Based Seroepidemiological Study. Islamic Republic of Afghanistan. Kabul, Afghanistan. Ministry of Public Health. July.
- Shioda, K., Lau, M.S.Y., Kraay, A.N.M., Nelson, K.N., Siegler, A.J., Sullivan, P.S., et al., 2020. Estimating the cumulative incidence of SARS-CoV-2 infection and the infection fatality ratio in light of waning antibodies. medRxiv 2020.
- Šmigelskas, K., Petrikonis, K., Kasiulevičius, V., Kalėdienė, R., Jakaitienė, A., Kaselienė, S., Sauliūnė, S., Beržanskytė, A., Stankūnas, M., 2021. SARS-CoV-2 seroprevalence in Lithuania: results of national population survey. *Acta Med. Lit.* 28 (1), 48–58. <https://doi.org/10.15388/Amed.2020.28.1.2>. Epub 2021 Jan 18. PMID: 34393628 PMC8311832.
- Sullivan, P.S., Siegler, A.J., Shioda, K., Hall, E.W., Bradley, H., Sanchez, T., Luisi, N., Valentine-Graves, M., Nelson, K.N., Fahimi, M., Kamali, A., Sailey, C., Lopman, B.A., 2022. Severe acute respiratory syndrome coronavirus 2 cumulative incidence, United States, August 2020–December 2020. *Apr 9 Clin. Infect. Dis.* 74 (7), 1141–1150. <https://doi.org/10.1093/cid/ciab626>. PMID:34245245. PMC8406864.
- Talla, C., Loucoubar, C., Roka, J.L., Barry, M.A., Ndiaye, S., Diarra, M., Thiam, M.S., Faye, O., Dia, M., Diop, M., Ndiaye, O., 2022. Seroprevalence of anti-SARS-CoV-2 antibodies in Senegal: a national population-based cross-sectional survey, between October and November 2020. *IJID Regions* 3, 117–125. Jun 1.
- Tang, X., Sharma, A., Pasic, M., Brown, P., Colwill, K., Gelband, H., Birnboim, H.C., Nagelkerke, N., Bogoch II, Bansal, A., Newcombe, L., Slater, J., Rodriguez, P.S., Huang, G., Fu, S.H., Meh, C., Wu, D.C., Kaul, R., Langlois, M.A., Morawski, E., Hollander, A., Eliopoulos, D., Aloï, B., Lam, T., Abe, K.T., Rathod, B., Fazel-Zarandi, M., Wang, J., Iskilova, M., Pasculescu, A., Caldwell, L., Barrios-Rodiles, M., Mohammed-Ali, Z., Vas, N., Santhanam, D.R., Cho, E.R., Qu, K., Jha, S., Jha, V., Suraweera, W., Malhotra, V., Mastali, K., Wen, R., Sinha, S., Reid, A., Gingras, A.C., Chakraborty, P., Slutsky, A.S., Jha, P., Investigators, Ab-C Study, 2022. Assessment of SARS-CoV-2 Seropositivity during the First and Second Viral Waves in 2020 and 2021 Among Canadian Adults. *JAMA Netw Open*, vol. 5. PMID, e2146798. <https://doi.org/10.1001/jamanetworkopen.2021.46798>. PMID:35171263. Feb 1 PMC8851304.
- Virachith, S., Pommélet, V., Calvez, E., Khounvisith, V., Sayasone, S., Kounnavong, S., Maxay, M., Xangsayath, P., Temmam, S., Eloït, M., Escriou, N., Rose, T., Vongphayloth, K., Hübschen, J.M., Lacoste, V., Somlor, S., Phonekeo, D., Brey, P.T., Black, A.P., 2021. Low seroprevalence of COVID-19 in Lao PDR, late 2020. *Aug Lancet Reg Health West Pac* 13, 100197. <https://doi.org/10.1016/j.lanwpc.2021.100197>. Epub 2021 Jul 14. PMID: 34278365 PMC8277598.
- Vos, E.R.A., van Boven, M., den Hartog, G., Backer, J.A., Klinkenberg, D., van Hagen, C. E., Boshuizen, H., van Binnendijk, R.S., Mollema, L., van der Klis, F.R.M., de Melker, H.E., 2021. Associations between measures of social distancing and severe acute respiratory syndrome coronavirus 2 seropositivity: a nationwide population-based study in The Netherlands. *Dec 16 Clin. Infect. Dis.* 73 (12), 2318–2321. <https://doi.org/10.1093/cid/ciab264>. PMID:33772265. PMC8083720.
- Ward H, Cooke GS, Atchison C, Whitaker M, Elliott J, Moshe M, Brown JC, Flower B, Daunt A, Ainslie K, Ashby D, Donnelly CA, Riley S, Darzi A, Barclay W, Elliott P. Prevalence of Antibody Positivity to SARS-CoV-2 Following the First Peak of Infection in England: Serial Cross-Sectional Studies of 365,000 Adults. *Lancet Reg Health Eur*. 2021 May;vol. 4:100098. doi: 10.1016/j.lanepe.2021.100098. Epub 2021 May 2. PMID: 33969335; PMID: PMC8088780.
- Warszawski, J., Meyer, L., Franck, J.E., Rahib, D., Lydié, N., Gosselin, A., Council, E., Kreling, R., Novelli, S., Slama, R., Raynaud, P., Bagein, G., Costemalle, V., Sillard, P., Fourie, T., de Lamballerie, X., Bajos, N., Epicov Team, 2022. Trends in Social Exposure to SARS-Cov-2 in France. Evidence from the National Socio-Epidemiological Cohort-EPICOV. *PLoS One*. May 25, vol. 17. PMID, e0267725. <https://doi.org/10.1371/journal.pone.0267725>. PMID: 35613100 PMC9132278.
- Williamson, E.J., Walker, A.J., Bhaskaran, K., Bacon, S., Bates, C., Morton, C.E., Curtis, H.J., Mehrkar, A., Evans, D., Inglesby, P., Cockburn, J., McDonald, H.I., MacKenna, B., Tomlinson, L., Douglas, I.J., Rentsch, C.T., Mathur, R., Wong, A.Y.S., Grieve, R., Harrison, D., Forbes, H., Schultze, A., Croker, R., Parry, J., Hester, F., Harper, S., Perera, R., Evans, S.J.W., Smeeth, L., Goldacre, B., 2020. Factors associated with COVID-19-related death using OpenSAFELY. *Nature* 584 (7821), 430–436. Aug.
- Yoshiyama, T., Saito, Y., Masuda, K., Nakanishi, Y., Kido, Y., Uchimura, K., Mitarai, S., Suzuki, T., Nakagama, Y., Kubota, H., Satomi, M., Uchikoba, S., Ohnishi, M., Wakita, T., Kato, S., Kato, K., 2021. Prevalence of SARS-CoV-2-specific antibodies, Japan, June 2020. *Feb Emerg. Infect. Dis.* 27 (2), 628–631. <https://doi.org/10.3201/eid2702.204088>. PMID:33496235. PMC7853542.